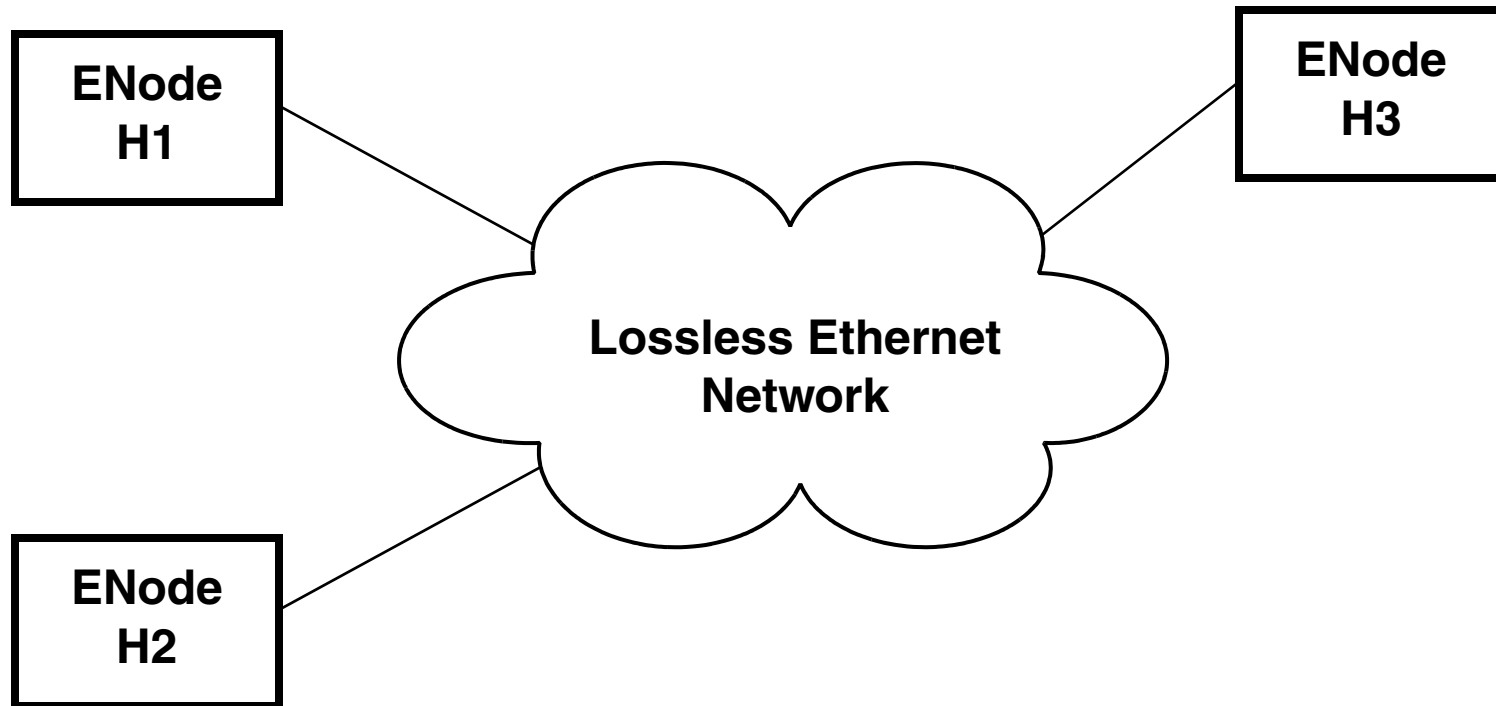


Jet Assist for FCoE P2P N_Port_ID Selection

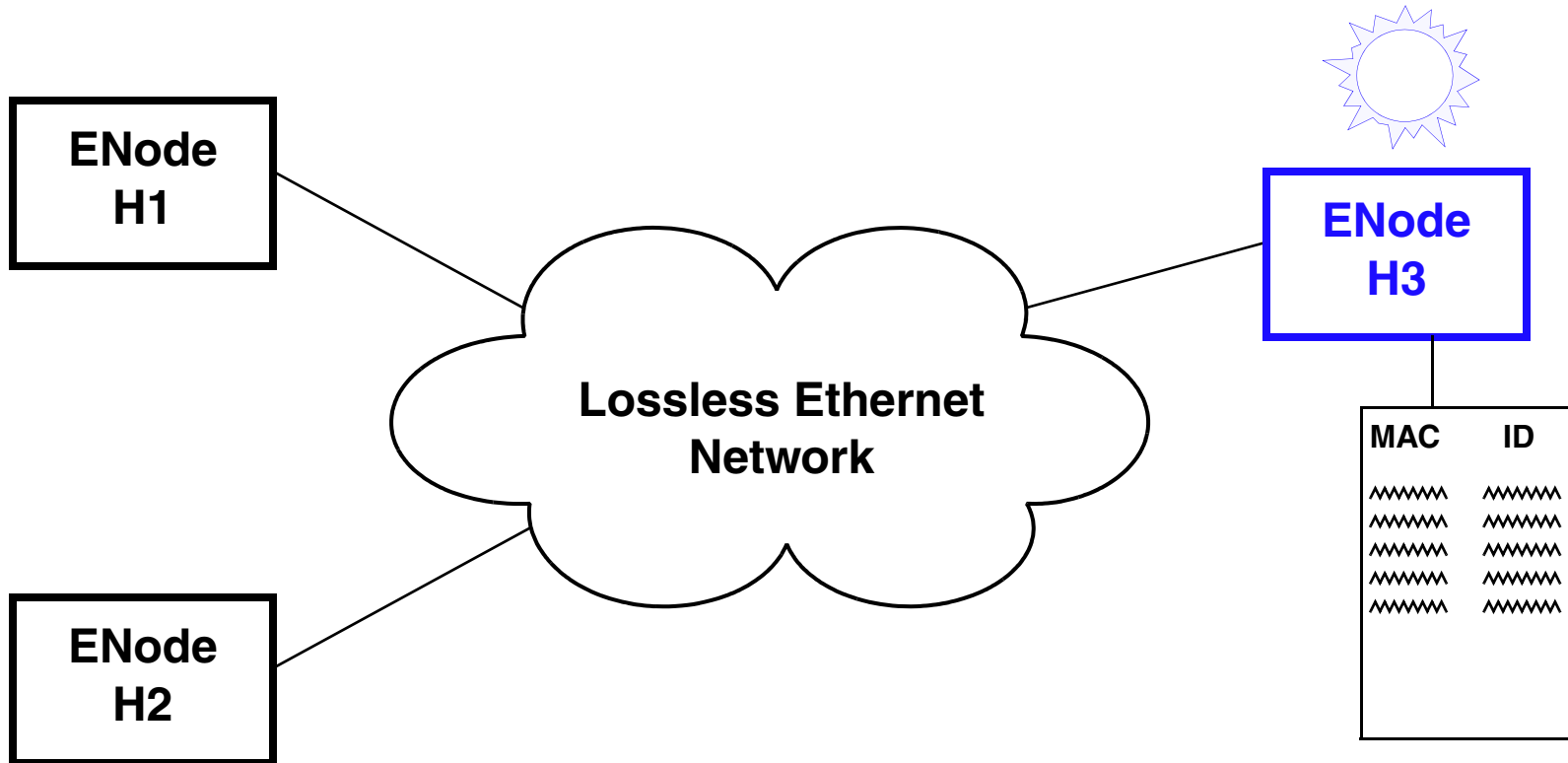
**Ralph Weber
T11/10-119v0**

From 10-060v0



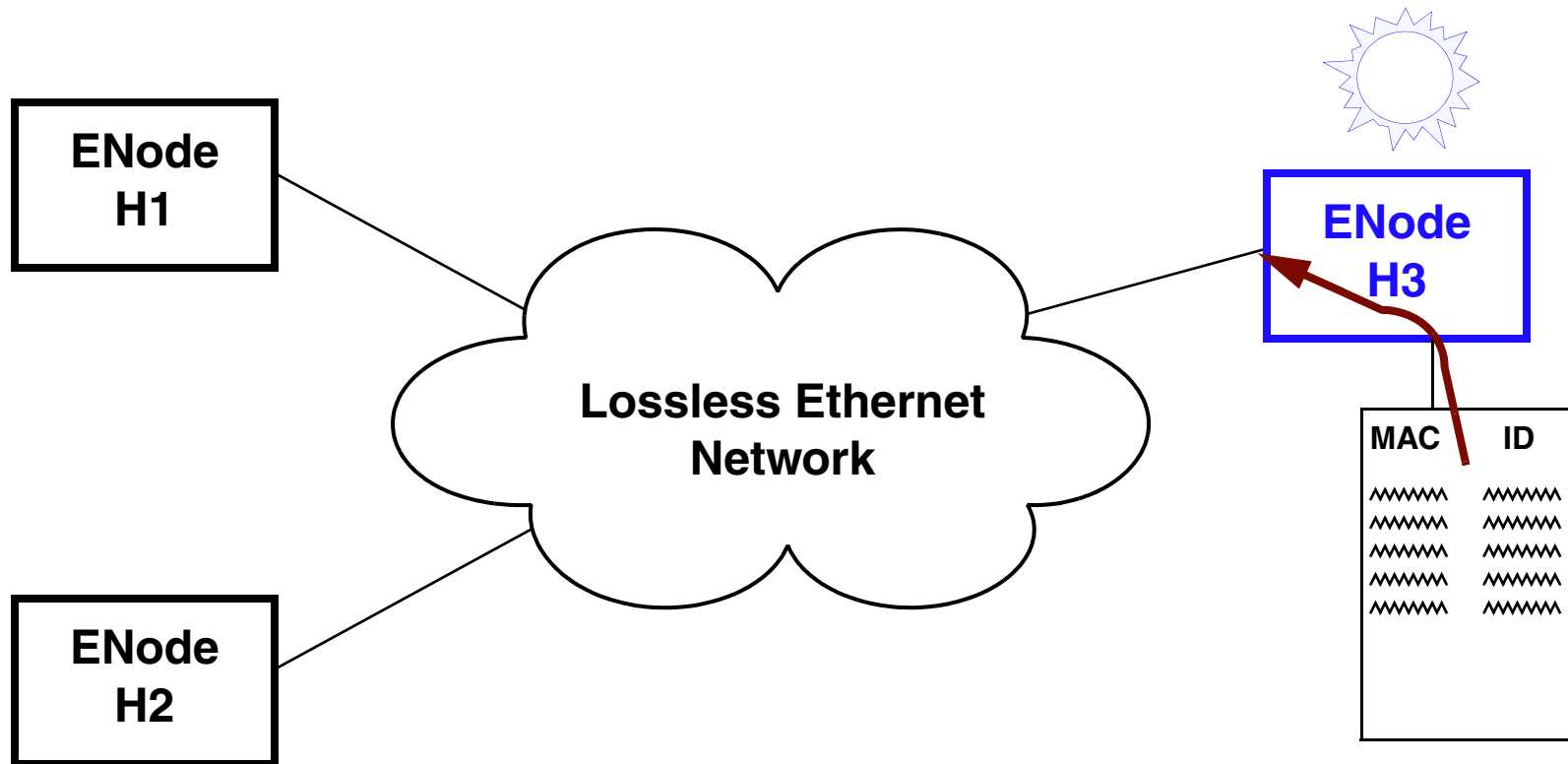
★ **Don't change any of this
or the basic ID Selection Protocol**

Just Add Something Extra



✓ Track MAC Address N_Port_ID pairs
in Claim Notification FIP messages

Knowledge is Power



- ✓ Preempt N_Port_ID Probe Requests with Probe Replies
- ✓ N_Port_ID owner need not be present

Key Protocol Points

- ★ Probe Reply from **bright ENode** are the same as from owning ENode
- ★ *Stereo* Probe Replies from owning ENode and **bright ENode** do not violate protocol (I think)
- ★ **Bright ENode** *could* contain a preconfigured list to lockdown N_Port_IDs used

Beneficial FIP Addition

(This is a protocol change. Sorry!)

→ N_Port_ID Probe Advice

- ✓ Sent in response to Probe Request
- ✓ Specifies N_Port_ID for Requesting MAC to use
- ✓ Probing ENode can ignore?

✦ Short-circuits Protocol

✦ Eliminates Lengthy Timeouts